

INSTALLATION.

Tools required for installation.

- Scissors
- Chop saw with blade for non-ferrous metal
- Rubber hammer
- Ladder
- Blankets/mats to protect the work area
- Drill (with vacuum recommended)
- Drill bit set for metal, wood and concrete
- Screwdriver set
- Level
- Square
- Pencil
- Tape measure
- Allen wrench set

Fastener or anchors for securing the mystic unit to the structure are not included with the unit. Installers must furnish appropriate type of fasteners depending on the material to which the unit will be secured.

Installation process.

ATTENTION!!! Keep all aspects of image, safety, etc. in mind.

THE Z-BOX IS A SELF-SUPPORTING SYSTEM. THEREFORE, THE GUIDES ARE FASTENED TO THE CONSTRUCTION AND THE CASING RESTS ON THEM.

PRIOR VERIFICATIONS

Whenever possible, check it before going to the customer

- Curtain measurements: Width
- Color of the casing, guides, accessories and the fabric
- Accessories: guides, spacers, remote control...
- Remote control or cable exit side

1º.- PREPARATION

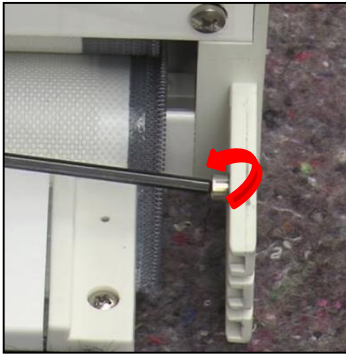


Safety blade

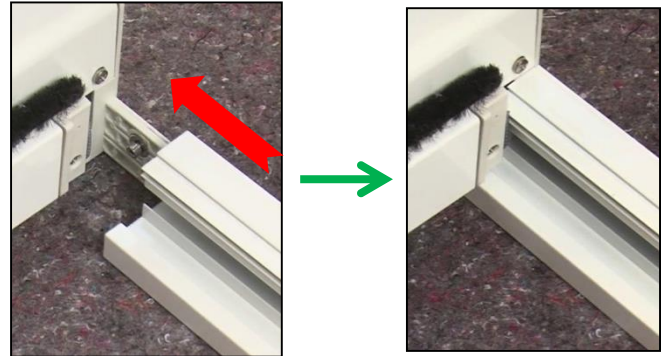
Used blankets or mats to cover the floor. Carefully open the packaging on the covered floor. Do not use a utility knife, use sissors or a safety blade.



1.- Join the guides to the casing. On the floor (over the protector) loosen the screw in the right casing cap (Allen No. 2.5).



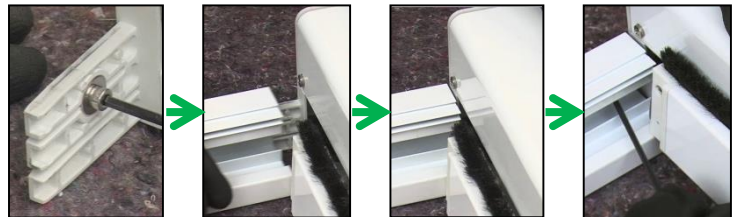
2.- Insert the right guide into the casing cap.



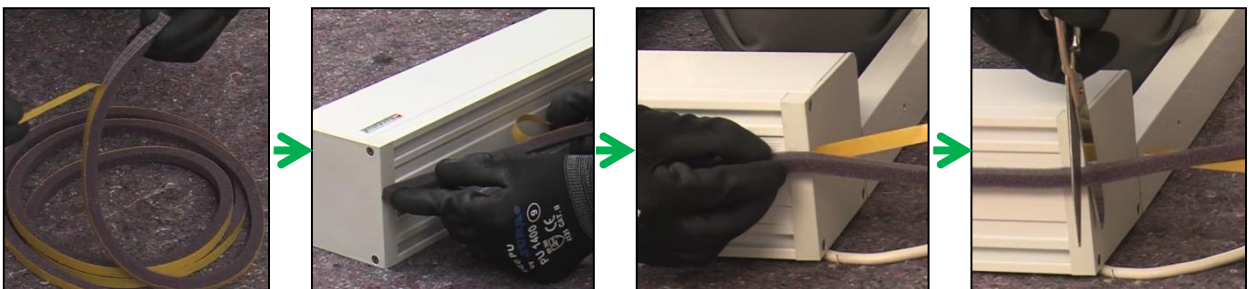
3.- Tighten the screw to fasten the guide to the casing (Allen No. 2.5).



4.- Do the same with the left guide.



5.- Fasten the adhesive foam to the top of the casing and cut the excess foam.
(For recessed mount only)



6.- While supporting the side rails, carefully rise the unit to the vertical position. And place the unit in the installation opening, with 2 people if necessary.



7.- Measure and level at the desired position.



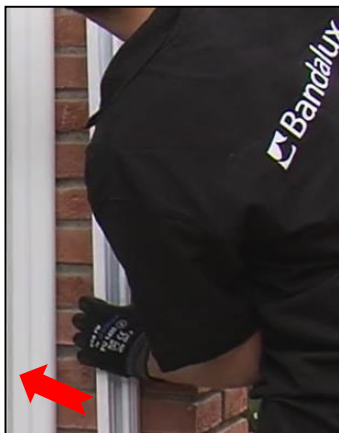
8.- For installation with expansion wall plugs, mark the holes in the anchoring surface.



9.- Slide the guides and drill the appropriate holes at the marks.



10.- Position the guides once again.



11.- Insert the wall plugs into the holes made.



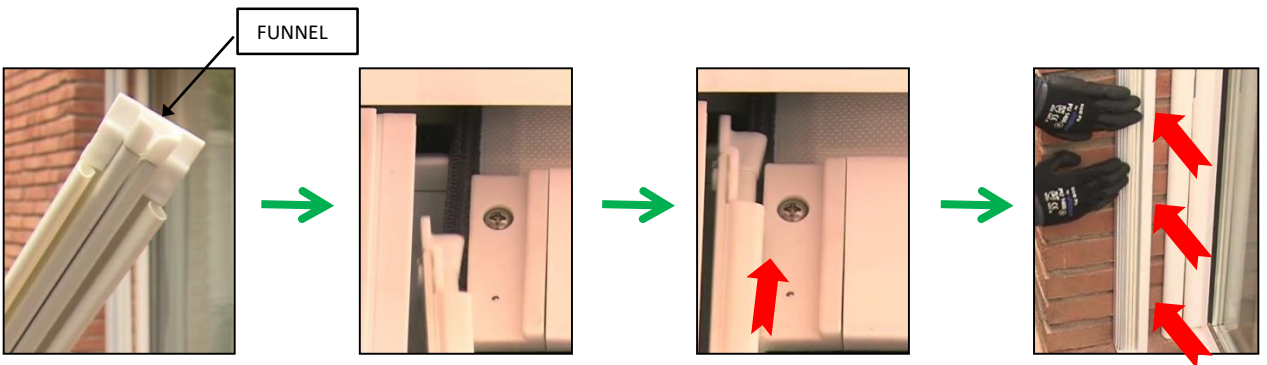
12.- Tighten the screws in each one of the holes of the guides.



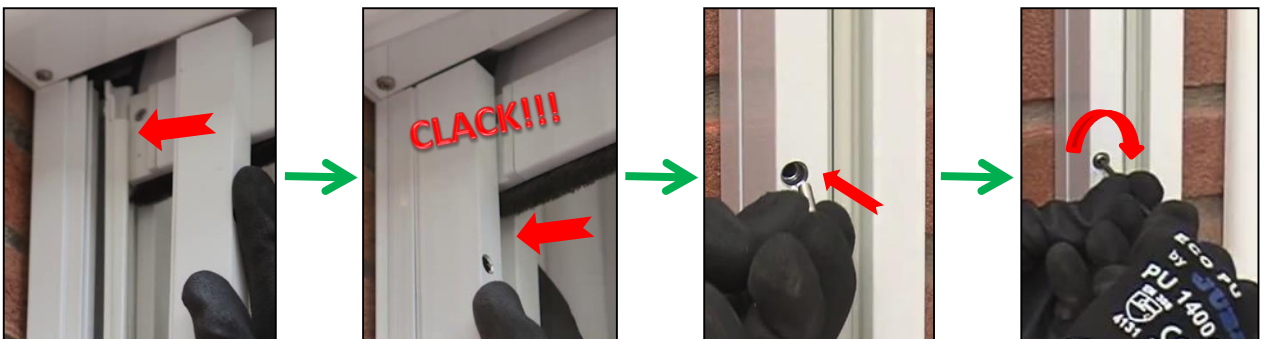
13.- For anchoring to metal or wood, tighten the screws directly, skipping steps 8, 9, 10 and 11.



14.- Insert the zipper of the fabric into the PVC edge, inserting it into the upper funnel, and insert the edge along the entire length of the guide. Do this for the 2 guides.



15.- Place the caps of the guides, clipping it until you hear a clack, and tighten with a No. 3 Allen wrench.



16.- Check the proper functioning of the curtain in its entire up and down trajectory.



It is very important that once the Z-BOX is installed, the curtain be perfectly square.

The width at the top should be the same as at the bottom.

Both diagonals must have exactly the same measurement.

And the guides must be perfectly level to prevent the bottombar from getting stuck.

In the event that the wall supporting the guides is not level, place filler between wall and the guide to fit and level.